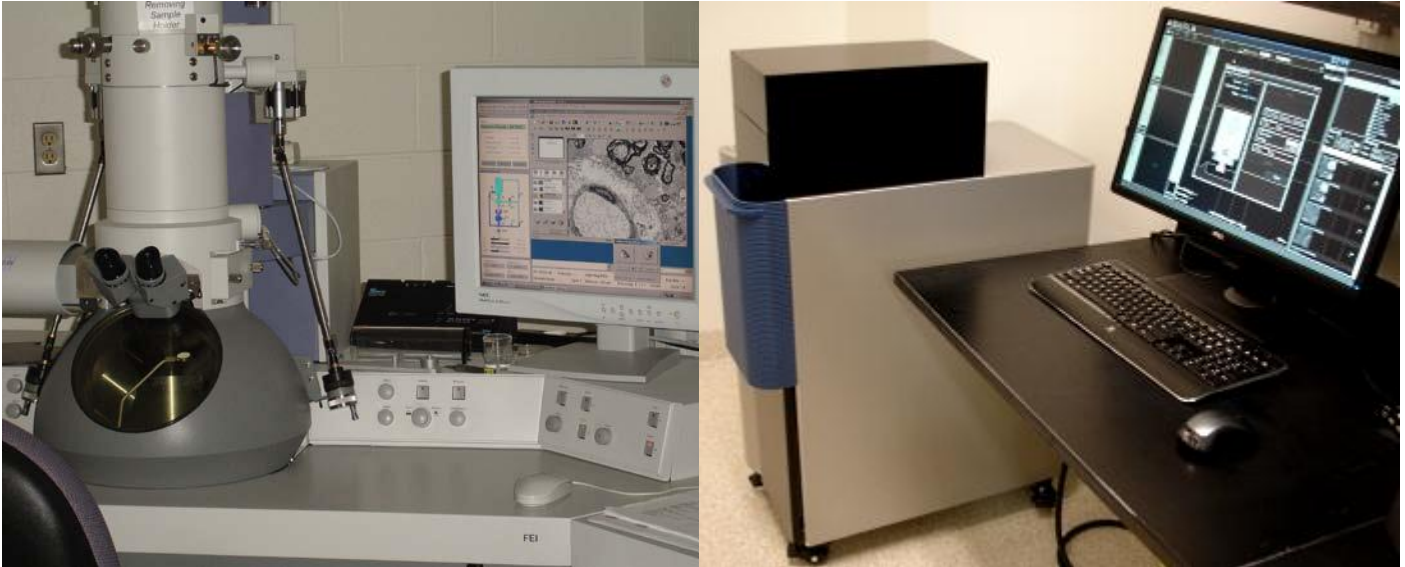


University of South Florida Department of Integrative Biology



Electron Microscope Facility

Microscope Services Available to Universities, Industry, and Commercial Labs

- Transmission and Scanning Electron Microscopy
- Transmitted and fluorescent light microscopy
- Specimen preparation
- Instrument training in TEM, SEM, and Light Microscopy and Consulting

Edward Haller, Lab Manager, has 37 years of experience in both biological and material science microscopy. He has experience with tissues, cells, bacteria, virus, implantable devices, nanoparticles, films and coatings. The Microscopy Core labs provide service to all research departments of the University of South Florida, as well as the USF College of Medicine, USF College of Public Health, USF St. Petersburg, USF New College, H. Lee Moffitt Hospital, the James A. Haley Veteran's Hospital, the University of Tampa, and industry in the greater Tampa Bay area.

University of South Florida Department of Integrative Biology Electron Microscope Facility

Hourly Rate (educational) *

TEM

Unassisted \$25.00

Assisted/or With Instruction \$40.00***

Simple Sample Preparation - Nanoparticles/Virus/Bacteria \$40.00

Sectioning, Thicks/Thins, Staining \$45.00 per Block

Fixation, Dehydration, Embedding, Sectioning and Staining \$200.00/Sample

Complex Sample Preparation and Photography \$240.00/Sample

Training and Consultation Time \$40.00

Unassisted use of Microtome or Knifemaker (Includes Glass) \$10.00

SEM

Unassisted \$25

Assisted/or With Instruction \$40.00***

Sample Preparation-Basic \$30.00 (Mount Dry Sample, Sputter Coat)

Sample Preparation-Biological-\$160.00/Sample

Critical Point Drying

Unassisted \$30.00/Run (User Supplies Reagents)

Assisted \$40.00/Hr

Sputter Coating \$10.00/Run

***Plus Supplies

*Non-educational Rates are 25% Higher

Contact: Edward Haller

ehaller@usf.edu

LAB ADDRESS: USF INTERDISCIPLINARY SCIENCE BUILDING

ROOM 1046

(ISA 1046)

813-974-2676

USF Department of Integrative Biology

MAIL ADDRESS SCA 110

4202 East Fowler Ave, Tampa, FL 33620

3-26-2012